



ANNUAL

**REPORT**

**2026**

# Summary

- 2** About L'Arche Calgary
- 3** **Connecting for Impact**  
A Message from Community Leader Ani Hynes
- 4** **Gratitude and Growth**  
A Message from Board President Maureen Ross
- 5** **Our Supporters**
- 6** **Homes of Belonging: Our Rebuild Journey**
- 7** **The Latest Numbers**
- 8** **Feature: L'Arche Calgary Art Show**
- 10** **2026 Run for L'Arche**
- 11** **Remembering**  
Alfred Lamouche & Diane Young



# About L'Arche Calgary

L'Arche Calgary is a member of the International Federation of L'Arche, a global network of 160 communities in 37 countries.

**L'Arche Calgary was founded in 1973**, and has been a community of celebration, friendship, and belonging for the past 53 years.

Today, L'Arche Calgary operates five group homes: **Annapurna**, **Haeremai**, **Kichiyak**, **Marymount**, and **Villa Maria**, as well as the Tamarack Day Program and the Supported Independent Living Program (SILP).

Our homes are guided by a family model of care, where Core Members and Assistants share the rhythms of daily life together. Assistants join us from across Canada and around the world, fostering mutually beneficial relationships in a community of people with and without intellectual disabilities.

The **Tamarack Day Program** offers engaging, person-centred opportunities for Core Members Monday through Friday. Through activities such as art, music therapy, and outings, participants pursue their interests, achieving personal goals, and building confidence in a welcoming environment.

Our **Supported Independent Living Program (SILP)** enables Core Members to live independently while receiving support. Assistance ranges from occasional visits to regular support with meal preparation, transportation, and medication management. SILP promotes personal growth, independence, and meaningful participation in the broader community, and is an area of significant and sustainable growth for our future.



## Identity

We are people with and without intellectual disabilities, sharing life in communities belonging to an International Federation.

Mutual relationships and trust in God are at the heart of our journey together.

We celebrate the unique value of every person and recognize our need for one another.

## Mission

Make known the gifts of people with intellectual disabilities, revealed through mutually transforming relationships.

Foster an environment in community that responds to the changing needs of our members, whilst being faithful to the core values of our founding story.

Engage in our diverse cultures, working together towards a more human society.

# Connecting for Impact

A Message from Community Leader Ani Hynes



As I reflect on this past year at L'Arche Calgary, I am filled with gratitude for the people who bring our mission to life each day. In a world that moves quickly and values productivity over presence, L'Arche remains a place where relationships matter, where every person belongs, and where we continue learning from one another about compassion, dignity, and community.

This year's theme of outreach and growth speaks to who we are becoming as a community. We continue to move outward into society, building meaningful relationships and partnerships, advocating for inclusion, and ensuring that the voices and gifts of people with intellectual disabilities are recognized and celebrated.

A significant area of growth this year has been our fundraising efforts for our project to rebuild three of our homes. This is a major undertaking and a profound expression of hope for the future of L'Arche Calgary. This rebuild will create affordable and accessible homes where Core Members can age with dignity over the next 50 years and beyond. We are encouraged by the generosity, trust, and commitment of the many individuals, families, organizations, and partners walking alongside us.

This year also brought moments of sorrow and transition. We said goodbye to some of our beloved long-term Core Members. We remember Alfred and Diane with love and gratitude, holding close the many ways they shaped our community through their friendship and gifts. They have left a lasting imprint on our hearts and on the spirit of L'Arche Calgary.

We also marked a milestone for our broader community life with the launch of our new Mission in Action Plan (MAP). This plan will guide our priorities, growth, and vision over the next four years. Through the process, we reflected on who we are, our calling, and how we will respond to evolving needs within our community and society.

A highlight was the incredible success of the 2026 Run for L'Arche. With the support of our new title sponsor, Hudson Advisory Group, and our planning team, volunteers, donors, and participants, we raised the largest amount in the event's history. Our community led and organized the event for the first time, exemplifying collaboration, commitment, and the strength of people who share a vision.

We are also navigating changes in government relationships and funding structures. We are engaged in a major funding review process, and while uncertainties remain, we are hopeful about strengthening relationships and participating in sector-wide advocacy for better support for people with developmental disabilities.

I am proud of all that our community has accomplished this year, but perhaps even more proud of the spirit in which we continue this work, with resilience, faithfulness, and hope. The work of building an inclusive society is never complete, and yet we continue to believe that another way of living together is possible: rooted in mutual relationships, shared humanity, and the recognition of each person's inherent value.

At L'Arche, we say that we are all responsible for sustaining community life. This responsibility belongs not only to leaders and assistants, but to every person who supports, believes in, and walks alongside our mission. Together, we create spaces where people are welcomed, where friendships transform lives, and where everyone has something important to give.

Thank you for your support, your trust, and your belief in L'Arche Calgary's mission. Thank you for helping us build a community and a society where everyone belongs.

Ani Hynes  
Executive Director, L'Arche Calgary



# Gratitude and Growth

A Message from Board President Maureen Ross

This past year has been filled with joyful moments of growth, cooperation, generosity, and friendship. Every day, we witness the gift of L'Arche's mission lived out through the dedication of our staff, volunteers, assistants, Core Members, families, and supporters. Whether it was creating our new Mission in Action Plan (MAP), presenting the Nativity Play, hosting a bake or art sale, or sharing a meal, L'Arche Calgary continues to build meaningful connections in a community that not only supports one another but also shines as a beacon of inclusion in Alberta.

An enduring highlight of the year was our 16th annual Run for L'Arche. Thanks to the incredible generosity of the private sector and the enthusiastic support of our new title sponsor, Hudson Advisory Group, the event raised more than \$65,000. We are deeply grateful for this new partnership and for every runner, donor, volunteer, and sponsor who made the event such a success. The energy and spirit of the day reflected the very heart of L'Arche: community serving together with joy and purpose.

I am continually inspired by the extraordinary staff, assistants, and volunteers who sustain L'Arche each day. Their compassion and creativity brings our mission to life in countless ways, often in quiet ways. Whether supporting daily life in the homes, organizing programs and events, fundraising, or offering friendship, they bring the mission to life. Thank you, as well, to the Best Buddies program, St. Mary's University students, Run for L'Arche volunteers, L'Arche Board of Directors, and the many program and home volunteers: their work reminds us that L'Arche is not simply a charity but an extended family built on relationships of mutual care, genuine commitment, and respect.

We look ahead to the next four years with gratitude and great hope. There is growing enthusiasm for the commencement of our rebuild project and breaking ground on the first new home. The interest and energy of the community and its supporters have been encouraging, and it is clear that this initiative is being embraced by those who cherish the vision of L'Arche.

Amidst challenges for charitable organizations across Canada, we continue to evolve and recognize that funding and fundraising are essential in providing the highest level of care for our senior members. L'Arche's strength remains rooted in the people who believe in our mission and walk alongside us. Your support allows us to continue creating places of belonging where every person's gifts are recognized and celebrated.

On behalf of the Board of Directors, thank you for your ongoing support, generosity, and belief in the mission of L'Arche. Together, we continue to build and model a more compassionate and inclusive society.

Maureen Ross  
President, Board of Directors, L'Arche Calgary



# Our Supporters

Since 1973, L'Arche Calgary has been a place of belonging, dignity, and community, and it would not be possible without the generosity of our supporters.

We are deeply grateful for the support of all levels of government, including the **City of Calgary Home Program**, Alberta's **Persons with Developmental Disabilities (PDD) program**, and its **affordable housing programs**. These partnerships make our work possible in meaningful and lasting ways.

Collective generosity is the reason we exist. It allows us to provide not only care, but a true sense of home and family for our Core Members. This shared commitment has sustained us through changing times, rising costs, and growing needs. It makes it possible to build communities where every person is seen, valued, and celebrated.

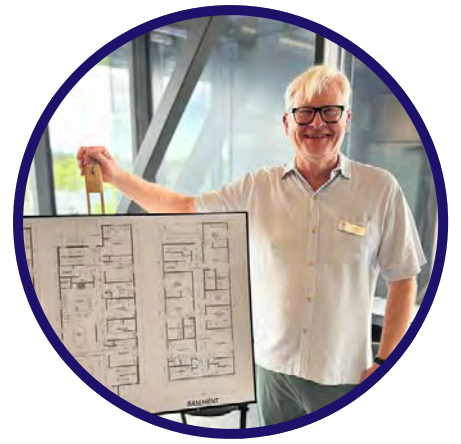
From all of us at L'Arche Calgary, thank you for being the heart of our mission. We are honoured to walk this journey together.

*Thank you.  
You make belonging possible.*

## Our Generous Donors

- CREB® REALTOR® Community Foundation
- Enterprise Mobility Foundation
- Hudson Advisory Group
- Jim and Vicki Wilson Family Fund at Calgary Foundation
- Joan and Kervin Raugust
- Len Perry and Lora Saccomani
- Marilyn Vavasour
- Poelzer Family Fund at Calgary Foundation
- Saccomani-Wetter Fund
- Sharon and Kevin Marjoram
- The Arthur J.E. Child Foundation
- Suzy Moutinho and Ralph Kroll
- Vicki & Brian Oliphant
- Frank Walsh & Loren Falkenberg
- Alice Payne
- Deborah Ambrose
- Walsh Family Trust
- Hudson Family
- Karen and John Zutter
- Maureen and Tom Ross
- Berkhold Family Foundation
- Gordon Berkhold
- Calgary Foundation Community Grant

We gratefully acknowledge all donors who supported L'Arche Calgary this year. Although not every donor is listed here, every contribution has made a meaningful difference in our community.



# Homes of Belonging: Our Rebuild Journey

Over the past year, L'Arche Calgary has continued to focus significant energy on our Rebuild Project. This work has included engagement initiatives such as L'Archtoberfest, ongoing fundraising and grant applications, and steady progress through municipal planning and permitting processes. While much of this work happens behind the scenes, it remains a central priority for our community.

At the heart of this project is the need to replace three of our aging homes, each now more than 60 years old. These homes are increasingly costly to maintain and no longer meet the accessibility needs of many Core Members. As our community supports Core Members in aging in place, it is clear these houses must evolve to remain true “forever homes” where dignity, safety, and belonging are upheld.

After extensive review, rebuilding has been identified as the most responsible and sustainable path forward. This approach allows us to create fully accessible, purpose-built homes that better reflect the current and future needs of our community. It also strengthens our long-term capacity to welcome and support people well into the future.

This past year we said farewell to Cenacle, a home that has been part of our community since the 1970s. In March, we gathered to honour the life and legacy of this space. Cenacle's site at 410 53 Avenue SW will be the location of our first new, fully accessible home.

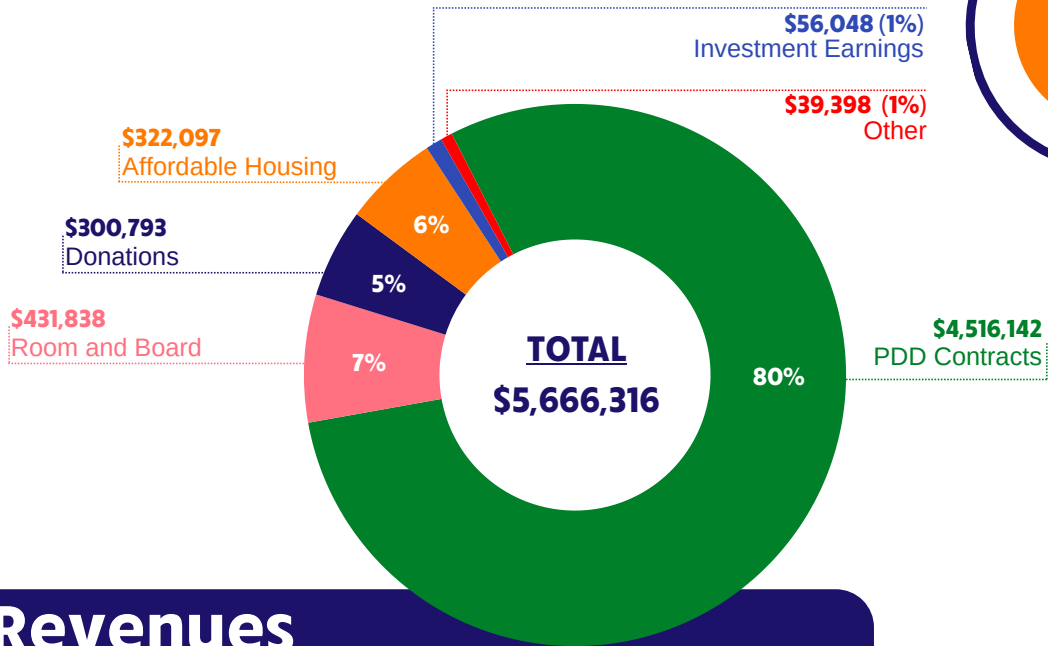
As we continue to move through design development, permitting, and partnership-building, we are grateful for the support that has carried this project forward. The Rebuild Project is not only about replacing buildings. It is about ensuring the long-term sustainability of L'Arche Calgary and strengthening our ability to respond to the changing needs of Core Members, now and into the future.

We invite you to continue this journey with us as we take the next steps toward building homes rooted in care, accessibility, and belonging.

**Read "The Cenacle: A House of Many Lives"**

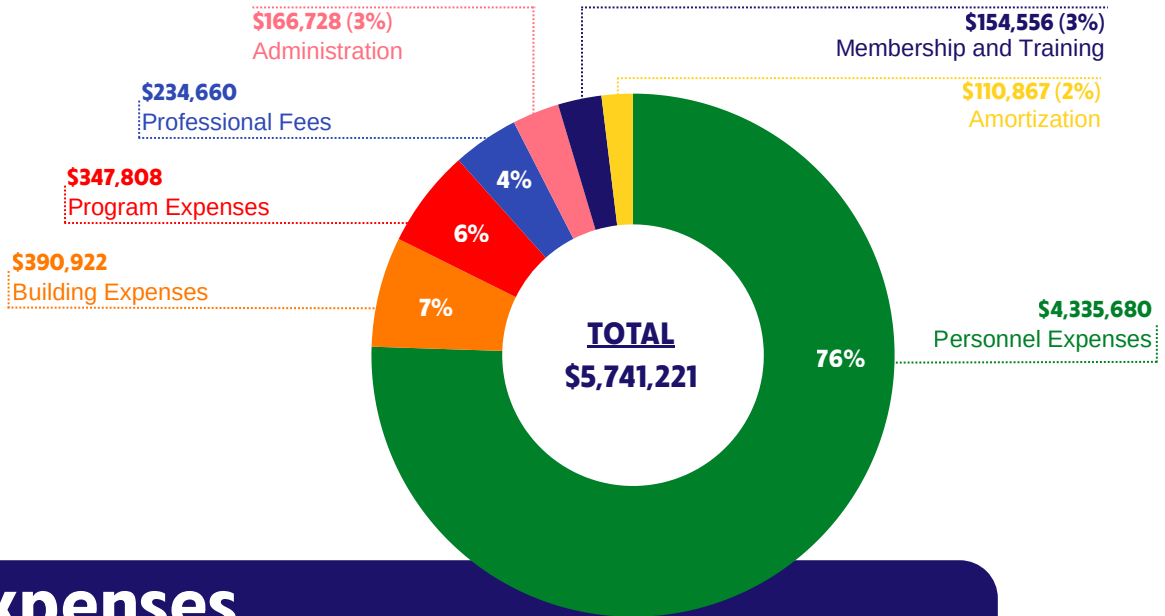


# The Latest Numbers



## Revenues

**PDD Contracts:** \$4,516,142     **Affordable Housing:** \$322,097  
**Room and Board:** \$431,838     **Investment Earnings:** \$56,048  
**Donations:** \$300,793     **Other:** \$39,398  
**TOTAL:** \$5,666,316



## Expenses

**Personnel Expenses:** \$4,335,680     **Administration:** \$166,728  
**Building Expenses:** \$390,922     **Membership and Training:** \$154,556  
**Program Expenses:** \$347,808     **Amortization:** \$110,867  
**Professional Fees:** \$234,660     **TOTAL:** \$5,741,221

# L'Arche Calgary Art Show

A Celebration of Creativity and Inclusion



This year, L'Arche Calgary hosted its first Art Show since 2023, marking an exciting milestone for the Tamarack Day Program Art Studio.

Following the major renovation of the Umiak office space and its reopening in October 2023, a dedicated art studio was created to provide Core Members with a space to explore their creativity, develop new skills, and express themselves through art. In January 2025, Anita Harris joined the program as Art Teacher, bringing new energy, techniques, and opportunities for artistic growth. Since then, Core Members have created an impressive collection of work, experimenting with a variety of styles, materials, and methods.

The Art Show, held at cSPACE Marda Loop, showcased more than 150 original pieces, many created in the studio. The exhibition represented months of preparation and artistic exploration, highlighting both the talents of individual artists and the success of the program as a whole.

Over the course of the week, we welcomed hundreds of visitors, including longtime friends of L'Arche and many people who were encountering our community for the first time. Their attendance was driven by social media, word of mouth, and a feature story by CTV News. Visitors had the opportunity to meet artists and engage with the stories behind the artwork.



*"If you've gone through a hard time or too much in one day, it's meditative, so you can focus on one thing and one thing only and everything takes a backseat or goes away."*

*- Patrick, Core Member in the Supported Independent Living Program (SILP)*

Core Member Patrick being interviewed by CTV on June 3, 2026

# L'Arche Calgary Art Show

A Celebration of Creativity and Inclusion

The response was overwhelmingly positive. Through the sale of 54 original paintings, numerous art prints, and additional donations, we raised **\$4,425** in support of the Tamarack Day Program Art Studio.

Beyond these results, the most meaningful impact was the experience of the artists themselves. Throughout the exhibition, Core Members shared their work with pride and enthusiasm, experiencing the joy of seeing others connect with, celebrate, and purchase their art. The event demonstrated how the studio has become a place where creativity flourishes and where artists are empowered to share their gifts with the wider community.

We are deeply grateful to everyone who attended, donated, purchased artwork, and helped share the event with the wider community. The success of this year's Art Show reflects the continued growth of the Tamarack Day Program Art Studio and the power of art to foster creativity, connection, and belonging.



CTV News Coverage  
of the Art Show



# RUN FOR L'ARCHE



Powered by

Hudson Advisory Group

ScotiaMcLeod, a division of Scotia Capital Inc.

**Scotia Wealth Management.**

The 2026 Run for L'Arche, held on April 11 at Confluence Plaza, marked a historic milestone for L'Arche Calgary as our **largest Run to date**, with 470 registered participants. The event brought together runners, walkers, volunteers, families, and supporters in a powerful celebration of belonging for people with intellectual disabilities.

The day was filled with joy as participants of all ages and abilities came together in support of L'Arche Calgary's mission. This year also marked an important transition in leadership support, as **Hudson Advisory Group, Scotia Wealth Management** joined as our new title sponsor following 16 years of partnership with Rogers/Acera Insurance. Their involvement brought a meaningful personal connection, highlighted by Gareth Hudson speaking at the event alongside his family, including his brother Stephen, a Core Member at L'Arche Calgary.

The success of the Run was made possible through the dedication of staff, volunteers, sponsors, and community partners. Approximately half of participants were new to the event, providing an important opportunity to connect with new audiences. Endurance athlete, Guinness World Record holder, and advocate Martin Parnell served as Race Starter, setting an inspiring tone for the day.

The 2026 Run for L'Arche raised \$69,649, contributing to over \$860,000 raised since 2011. Beyond fundraising, the Run continues to be a meaningful expression of community, where every step reflects shared commitment to dignity, relationships, and belonging.



**\$69,649**



# Remembering

## Reginald Alfred Lamouche

June 1938 - July 2025



It is with deep love and sadness that we share the passing of our dear friend, Alfred. Alfred was 87 years old and has been a cherished part of L'Arche Calgary since 1985. As our most senior Core Member, Alfred's presence was a quiet but steady thread in the fabric of our community.

Alfred brought so much heart to L'Arche. He had a gentle spirit and an abundance of love, especially for animals and children, who always seemed drawn to his warmth and kindness. His love of making birdhouses alongside Reg reflected his patient spirit and the care he put into everything he did. Those little homes for birds will always remind us of the big home he helped create here with us.

Over the years, Alfred also embraced his Indigenous heritage with grace and pride. It was a meaningful part of his journey, and we were honoured to walk alongside him as he explored his identity and participated in practices that celebrated his roots.



As we grieve, we also give thanks - for Alfred's life, his legacy, and the many ways he shaped our community. His absence is felt deeply, but so is his lasting presence in our memories and in the spirit of L'Arche Calgary.



# Remembering

## Diane Young

March 2, 1954 - January 26, 2026

Diane Young, age 71, a cherished long-term Core Member of our community, passed away in January.



Diane joined our L'Arche family on April 29, 1994, and over the years, she touched many hearts. She lived at Marymount and, later in her time with us, at Annapurna. As her health declined, Diane moved to Clifton Manor Home Care in February 2017 and was later supported by SILP until January 2024. Although she was no longer living at a L'Arche Calgary home during those nine years, Diane remained present in the memories and hearts of our community.

Diane had a special way about her that touched everyone she met and will be most remembered for her quick wit.

Rest in peace, sweet Diane. You will be missed and lovingly remembered.





# L'ARCHE® Calgary

L'Arche Association of Calgary  
307-57 Ave SW  
Calgary, AB T2H 2T6

[www.larchecalgary.org](http://www.larchecalgary.org)

**T: (403) 571-0155**

**F: (403) 255-1354**

**E: [office@larchecalgary.org](mailto:office@larchecalgary.org)**

Charity registration # 132707787RR0001

## Find us Online



@larchecalgaryofficial



@larchecalgary



L'Arche Calgary Community



@larchecalgary